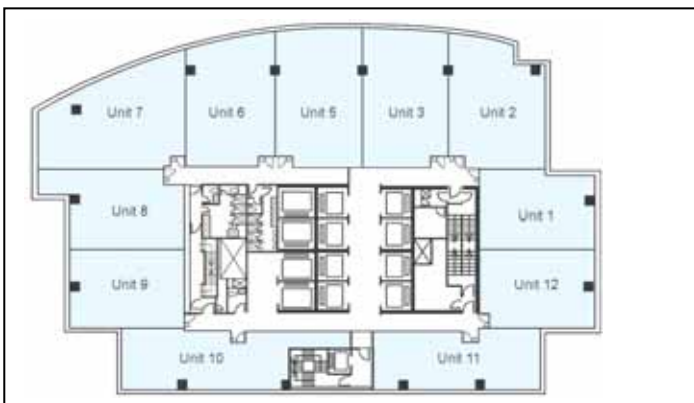


- BUILDING** : **Ever Gain Plaza**  
88 Container Port Road  
Kwai Chung
- LOCATION** : It is centrally located between Kwai Fong & Lai King District with only 5 min. walk from Kwai Fong MTR station. This strategic location is benefitted from its close proximity to Route 3 Expressway and with only 15 minutes drive from T.S.T.
- DESCRIPTION** : A 30-storey twin tower Grade A I-O development with LG/F to 6/F as loading & parking spaces and 8/F to 28/F as I-O spaces. Optical fibre/broad band. Shuttle bus provided to/from Kwai Fong and Lai King MTR. Existing occupiers: Canon, JOS, HKNet, Jardine Shipping, IXTech, etc...
- TYPICAL FLOOR SIZE** : 19,600 - 23,642 sq ft gross
- AVAILABILITIES** : 1,727 – 39,420 sq. ft. gross
- MANAGEMENT FEE & A/C CHARGES** : HK\$1.97 per sq. ft. gross

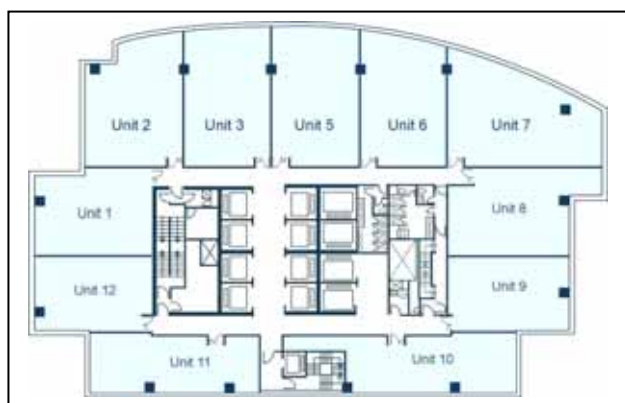
**Typical Floor Plan - Tower 2**

For Reference Only, Not to Scale



**Typical Floor Plan - Tower 1**

For Reference Only, Not to Scale



**The Marketing Agent – Colliers International Agency Ltd**  
**INDUSTRIAL/OFFICE DEPARTMENT**

**2822 0660**

**SUBJECT TO CONTRACT**

**SUBJECT TO CONTRACT:** This document has been prepared by Colliers International Agency Limited for information only. Whilst reasonable care has been exercised in preparation of this document, it is subject to change and Colliers International Agency Limited makes no representation as to its truth, accuracy or completeness, and accordingly cannot be held responsible for any liability whatsoever or for any loss howsoever arising from or in reliance upon the whole or any part of the contents of this document.